



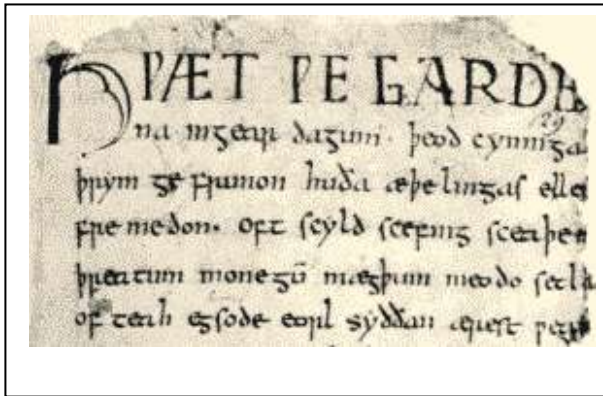
The Welsh inscription reads: 'I am not in the office at the moment. Send any work to be translated'



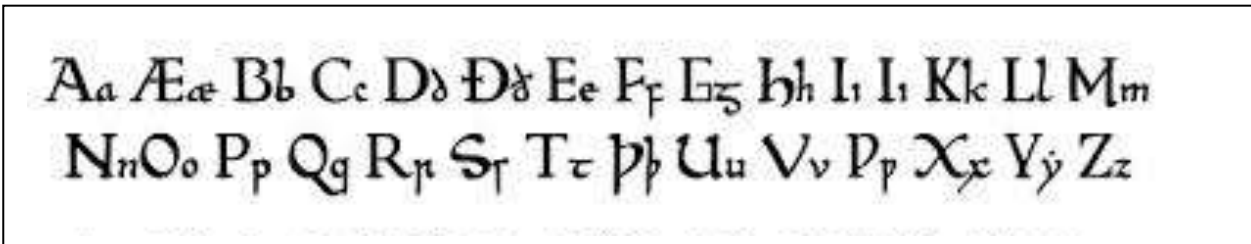
Crowning of the Bard (Eluned Phillips), National Eisteddfod, Bala, 1967, by Archdruid Gwyndaf



Opening verses of "Origo Mundi" in Middle Cornish (anon. 14th C. Monk)



Opening lines of "Beowulf" (Old English)



Old English Alphabet (top 2nd left: "Ash"; top 6th left: "Eth"; Bottom 8th left: "Thorn"; bottom 4th right: "Wynn")