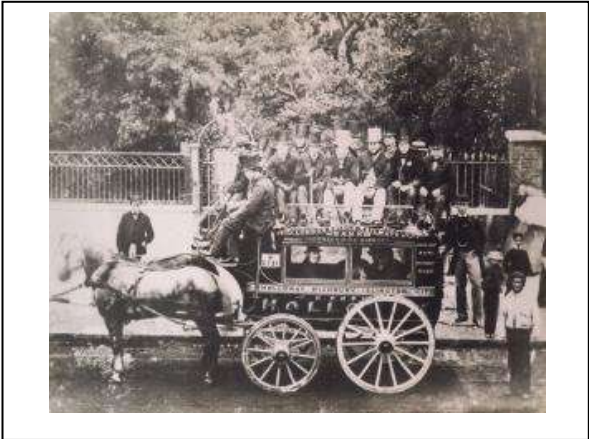




**Artist's impression of
George Shillibeer's
Omnibus, 1829**

**London General Omnibus
Company's 'knifeboard'
Omnibus; Highbury to
Hornsey route, 1860 to 1870**



**George Train's
experimental horse-drawn
tram, 1861**

**A horse tram operating on the
Aldersgate Street to Clapton
route, circa 1888.**

